

Gryffe High School



Primary – Secondary Induction Week
Monday 10 June – Friday 14 June 2019

Welcome to Gryffe High School

Your five day visit to Gryffe High School takes place on Monday 10 June, Tuesday 11 June, Wednesday 12 June, Thursday 13 June and Friday 14 June, 2019.

We think it would be helpful for you to know some staff before you arrive...



Mr Johnson
Head Teacher

"I am delighted to welcome you to Gryffe High School. We are a school that likes to get to know you well, works hard to help you do your best and takes great pleasure in seeing you flourish as an individual and sharing in your successes – both in and out of school.

We have many strong values that we hold true to our heart, with the 3 key values of CARING LEARNING ACHIEVING being central to all we do. Enjoy your induction days, make a great impression to your new teachers and we look forward to many years of you feeling safe, happy, valued and successful."



Mrs Brown
Depute Head Teacher
gw07brownangela3@glow.sch.uk

"My name is Mrs Brown. I am the Year Head for S1. I have heard great things about you from your P7 teachers. I am looking forward to welcoming you to the Induction Week in June and to working together to achieve great things from August onwards."



Miss Brown
PT Support for Learning
gw07brownfiona6@glow.sch.uk

"The Support from Learning Department would like to welcome any pupil or parent, at any point during their time in Gryffe High School, to contact us if they have any concerns at all about their learning. As well as being able to support pupils with longer term Additional Support Needs (such as those working with Dyslexia or ASD) we can also help pupils with short term, flexible support as and when needed."



Mrs Costello
PT Wellbeing

“Hello! I am Mrs Costello. You will find me working with pupils in the support department and teaching in the Science corridor! Mrs Whiteford & I run both the Breakfast & Lunch clubs & meet pupils who are needing some additional support with their learning, feeling included or general wellbeing. Find us in the Wellbeing Hub and stop by and say hello!”



Mrs Whiteford
ASNA

“All pupils are very welcome to attend the Breakfast Club held each morning in the Wellbeing Hub from 8:00 – 8:45 am. Whether you would like to have a quick bite of breakfast, we have toast, cereal and fruit available; catch up on your homework or just have a chat with your friends there is always 6th year Wellbeing Ambassadors and a member of staff on hand to help. Lunch/Homework Club takes place in the same room where you may choose to eat your lunch, chat and get help with homework. 6th year Wellbeing Ambassadors and staff are always available.”



Miss O'Hara
Pupil Support Teacher

“Hello S1! May I extend a very warm welcome to Gryffe High School. I can't wait to meet you and help to guide you through this next year, which will be so wonderfully full of new people and new experiences. You might spot me in various places around the school including Art, Drama, and the Pupil Support corridor. If you ever feel the need to "Doodle and De-stress" then come and join my relaxing weekly club full of stress-free scribbling! See you soon.”



Mr Anderson
PT Attainment BGE

“Welcome to Gryffe High School! I am Mr Anderson and I can often be found in the English Corridor or in Pupil Support. I am looking forward to meeting you all at the induction week this year. I will be looking after your progress as develop your skills through your many subjects. I am confident you will enjoy all the different learning and extra-curricular activities we have to offer you through the year!”



Mrs Stefanatos
Transition Teacher

"Hello new S1. Many of you will already know me from P7. My role is to help P7 have a smooth transition into S1. In Gryffe High I will be mainly based in your English and Maths classes. I look forward to us moving on together."



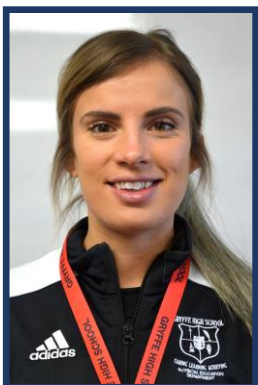
Miss Carmichael
PT Pupil Support – Burns

"Welcome to the start of your Gryffe journey. My name is Mrs Carmichael and I am the Guidance teacher who leads Burns House. I am very much looking forward to meeting you all and getting to know you as you enter S1. Along with the rest of the Guidance team, I will help to support you through this exciting time of transition (hopefully allowing us to gain the winning House Cup for the second year in a row!) See you all soon!"



Mr Clark
PT Pupil Support – Fleming

"Welcome to the beginning of the next stage of your school life! I'm Mr Clark and am the guidance teacher and head of Fleming house. We are definitely the brightest house and that may be something to do with the house colour (bright yellow!) Moving to High School is a big change for anyone and I will, like all the guidance staff make sure that you have the correct support in making this transition and throughout your time in Gryffe. I look forward to meeting and getting to know you all this week. Oh, and detailing the plan for winning back the House Cup next year.....See you soon!"



Miss Holmes
PT Pupil Support – Wallace

"Welcome S1 to the next exciting chapter of your educational career. You will quickly find out that there are many ways to keep yourself busy and the opportunities to develop your knowledge, skills and abilities are endless within Gryffe High School! Congratulations if you have made it into the best house in the school (Wallace of course), commiserations if not - I look forward to the various house challenges ahead and cannot wait to ~~be crowned as~~ find out who will be champions this year!"



“Hi everyone, a huge welcome to Gryffe High school. I am Mr Findlay and I am the PT Support: Guidance Teacher for Mackintosh House. I am based in the Pupil Support corridor in Pupil Support Base 1. Come in and say hello! I am also a Maths teacher so I can also be found within the Maths department. My number one tip for anyone arriving at Gryffe is..... to get involved in everything that you possibly can. There is so much offered at Gryffe, there is something for everyone, no matter what your interests are. The more you get involved in, the more pupils and staff you get to meet and get to know. I am looking forward to getting to know you all and help support your transition from Primary into Secondary. I am sure you will do great and enjoy all the opportunities that Gryffe has to offer.”

Mr Findlay
PT Pupil Support – Mackintosh

Day 1 – Monday 10 June 2019

**Please enter via with Front Door and you will be escorted by
S6 Captains to your House Class**

The House Classes this session are: 1B, 1F, 1M, 1W and 1Wa
This morning you will meet your Guidance teacher and the S6 Buddies.
At your first Assembly you will be introduced to the Head Teacher, Mr C Johnson.
After this I will give you an outline of what is going to happen during the rest of your visit.

9.00am -9.20am	Welcome to Gryffe High School S1 classes – to be allocated Ice breakers/ Team Building/S1 Name Badges with School Captains
9.20am – 10.15am	S1 Assembly Expectations School Charter Vision, Aims and Values
10.15am – 10.30am	INTERVAL
10.30am – 11.30am	Meet you class, your Guidance Teacher and S6 buddies
11.30am – 12.25pm	Health and Safety Fire Drill and walk through
12.25pm – 1.10pm	LUNCH
1.10pm – 2.10pm	Fresher's Fayre
2.00pm – 2.30pm	Final round up in Theatre

Day 2 – Tuesday 11 June 2019

Please assemble in the school Theatre between 9.00am - 9.15am.

I will meet you in the Theatre at 9.15 a.m. Please sit with your new S1 class in the area that you were given on Day 1. Again don't worry about anything because S6 Guides will be there.

9.15am – 9.40am	All S1 to classes
9.40am – 10.30am	All S1 pupils to classes.
10.30am – 10.45am	Presentation
10.45am – 11.00am	INTERVAL - Dining Hall and toilets.
11.00am – 11.35am	All S1 pupils to classes.
11.35am – 12.25pm	All S1 pupils to classes.
12.25pm – 1.15pm	LUNCH Dining Hall, toilets and outside – weather permitting.
1.15pm – 2.00pm	DRAMA PLAY- 1st DAY AT SCHOOL Mrs B Carter
2.00pm – 2.30pm	All S1 pupils to classes.
2.30pm	Dismissed from Gryffe High School

You will be collected from the Theatre and taken to your first class. Your new timetables are currently being made up therefore pack your school bag as follows: pencil case with pens, pencils, rubber etc, PE kit and packed lunch or money for the school dining hall.

After your first 2 exhausting periods on your new timetable, the S6 Guides will collect you and take you to the Dining Hall for your interval. At the end of your interval you will return to the Theatre for a presentation. At the end of the presentation the S6 Guides will take you on to your second and then your third class of the day.

The Lunch break will take place at the end of your third class. Your lunch break will be earlier than the rest of the school: 12.25pm – 1.15 pm. The S6 Guides will collect you from your third class and bring you into the school dining hall. Here you can eat your packed lunch or purchase food from the dining hall. Prices are at the end of this booklet.

During the lunch break you may get the opportunity to go outside onto the artificial pitch (supervised only). Here you can stretch your legs and chat to your new classmates.

At 1.15 pm all S1 pupils will return to the Theatre. Here you will be treated to a performance of 1st Day at School, written and performed by pupils in Gryffe High School. This will hopefully will answer any questions and worries you have about coming to Secondary School

Finally you will be taken to your last class at 2.00p.m. The last class ends at 2.30 pm. S6 Guides will escort you back to the main entrance. Please check with your primary school what arrangements they have for you. Are you getting a bus back to your school? Do you have to make your own way home? Are your primary teachers collecting you and walking you back to school?

Day 3 – Wednesday 12 June 2019

Please assemble in the school Theatre between 9.00am - 9.15am.

I will meet you in the Theatre at 9.15 a.m. Please sit with your new S1 class in the area that you were given on Day 1. Again don't worry about anything because S6 Guides will be there.

9.15am – 9.40am	All S1 to classes
9.40am – 10.30am	All S1 pupils to classes.
10.30am – 10.45am	Presentation –
10.45am – 11.00am	INTERVAL: Dining Hall and toilets.
11.00am – 11.35am	All S1 pupils to classes.
11.35am – 12 noon	All S1 pupils to classes.
12 noon – 12.30pm	LUNCH: Dining Hall, toilets and outside – weather permitting. Move from Canteen to classes for 12.25pm
12.35pm – 1.20pm	House classes with Pupil Support Staff: Guidance and S6
1.20pm – 2.00pm	All S1 pupils to classes.
2.00pm – 2.30pm	All S1 pupils to classes.
2.30pm	Dismissed from Gryffe High School

Day 4 – Thursday 13 June 2019

Please assemble in the school Theatre between 9.00am - 9.15am.

I will meet you in the Theatre at 9.15 a.m. Please sit with your new S1 class in the area that you were given on Day 1. Again don't worry about anything because S6 Guides will be there.

9.15am – 9.40am	Meet in Theatre. Then all S1 to classes.
9.40am – 10.30am	All S1 pupils to classes.
10.30am – 10.45am	Presentation –
10.45am – 11.00am	INTERVAL - Dining Hall and toilets.
11.00am – 11.35am	All S1 pupils to classes.
11.35am – 12.25pm	All S1 pupils to classes.
12.25pm – 1.15pm	LUNCH Dining Hall, toilets and outside – weather permitting.
1.15pm – 2.30pm (Last 15 minutes in the Theatre)	House classes with Pupil Support Staff: Guidance and S6 P7 Pupil evaluations to be completed Information and instructions for Global Goals Day day to be issued Question and Answer session P7 and S6
2.30pm	Dismissed from Gryffe High.

Day 5 – Friday 14 June 2019 Global Goals Day

8.50 -9.15	Introduction in Theatre
9.15 – 9.45	Activity One
9.45 – 10.15	Activity Two
10.15- 10.45	Activity Three
10.45 – 11.00	INTERVAL (In Dining Hall) Pupils MUST be back with guides at 11.00
11.00 – 11.30	Activity Four
11.30 – 12.00	Activity Five
12.00 – 12.10	Evaluation Task Theatre – P7 Dining Hall – S1

Please note that every day you must be at Gryffe High School for 9.15am. **On Friday 14 June your day starts promptly at 9.15am because we have a number of visiting speakers.** Finishing times are 2.30pm every day except on the Global Goals Day when you finish at lunchtime. Again, please check with your primary school what arrangements they have for you. Are you getting a bus back to your school? Do you have to make your own way home? Are your primary teachers collecting you and walking you back to school? Is there a parent collecting you?

As with all schools, **please do not bring valuables** to Gryffe High School such as expensive mobile phones, iPods etc. You will be responsible for them if they are lost.

Dining Hall

The Dining Hall staff have made special arrangements to be open when you have your interval and lunch breaks, but just in case, please bring a drink and snack with you. Please bring cash with you as you are not on our school system for Parent Pay.

£1.75	Main meal - Mon-Fri (see board for choice)
£1.65	Pasta Pot –Mon-Fri
£1.65	Chicken popcorn - Mon-Fri
£1.20	Soup – Mon-Fri
£1.20	Monday - Pizza
£1.45/£1.65	Tuesday – Panini: Cheese, Cheese/ham, BBQ Chicken, Chicken Tikka
£1.60	Wednesday – Cheeseburger, Beef Burger, Chicken Burger
£1.45/£1.65	Thursday - Panini: Cheese, Cheese/ham, BBQ Chicken, Chicken Tikka
£1.60	Friday Hotdog
95p/90p/75p/45p	Mon – Fri (Interval only): Roll on bacon/sausage/potato scone/toast x2
80p	Bag of popcorn
70p	Flapjack/Empire Biscuit/Pancakes/Crackers
65p	Fruit pot
40p	Muffin
65p/75p	Omj/Soso Fruit juices drinks
45p	Milk/Water

I hope that you are looking forward to coming to Gryffe High School. I am certainly looking forward to meeting you and all of the other new First Year.

Yours sincerely



Mrs A Brown, Depute Head Teacher S1

PUPIL EVALUATION

Name: _____ S1 Class: _____

Current Primary School: _____

	Agree	Disagree
It was good to spend a full Induction week in Gryffe High School in June 2019		
It was important to me that I met my Guidance teacher this week		
It was important to me that I met S6 Guides this week		
I felt prepared and ready to go to Gryffe High School in August because of the Induction Week		
I would recommend that P7 get a full Induction Week next year		
List 2 things which you found to be good or helpful about this week.		
Tell us one thing we could improve on for next year		
Any other additional comments		

PARENT/CARER EVALUATION

	Agree	Disagree
I found the P7 Parents Evening helpful and informative		
The full Induction week in Gryffe High School prepared my child for Gryffe High School in August		
It was important for me to know my child's Guidance Teacher		
Suggestions on how we can improve the Parents Evening and Induction Week		
Any other additional comments		

Please hand in your completed evaluation to Gryffe High School or to your P7 teacher who will notify us to collect it.

Thank you